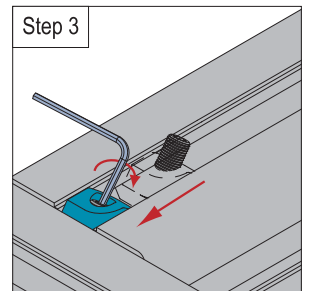
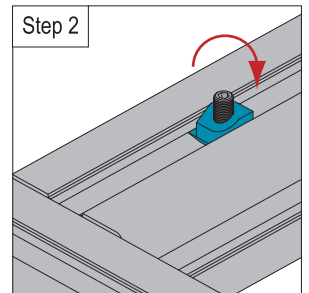
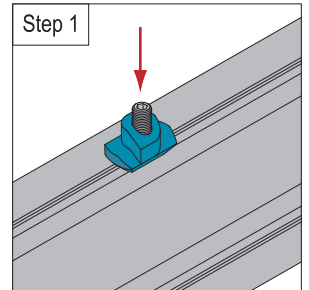
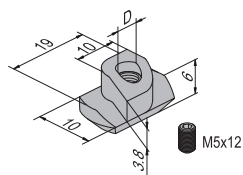
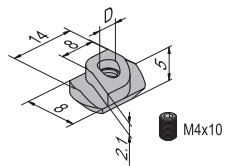
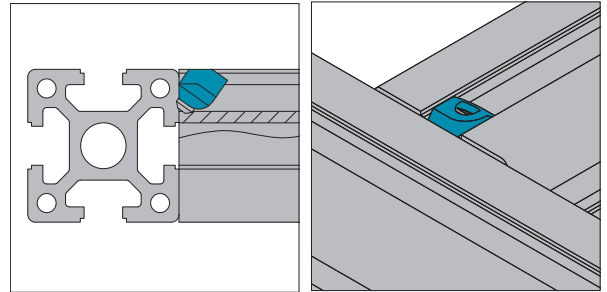


Fastening Elements  
紧固件

Potential Equaliser Nut **New!**  
导静电螺母

The Potential Equaliser Nut is twisted into the the profile groove, tilted to an angle of 45 degree, and the set screw driven in so as to bite jointly where two profiles meet. It destroys the insulating anodized layer and creates an electrically conductive connection. So It ensures that possible charge buildups are balanced out between the individual profiles of a construction.

导静电螺母可以在连接处刺透两端型材的氧化膜，从而导通型材内部静电，实现平均电势的作用。



Description 产品描述	D	Material 材质	Mass 重量 (g/pcs)	Part No. 订购编号
Potential Equaliser Nut-8-M4 (with top thread) 导静电螺母-8-M4 (含凹端顶丝)	M4	diecast zinc 锌合金	3	2.22.08.M4
Potential Equaliser Nut-10-M5 (with top thread) 导静电螺母-10-M5 (含凹端顶丝)	M5	diecast zinc 锌合金	7	2.22.10.M5